

# Zelienople Airport Project Information

## State Highway Relocation Project

### Beaver County, PA



Zelienople Airport





# Project Team

Design Team

Direct questions to:

Tony Sadaka, P.E.

Widmer Engineering Inc.

724-847-1696 Ext. 314

[tsadaka@widmerengineering.com](mailto:tsadaka@widmerengineering.com)

Please complete survey at end of the presentation





# Purpose of Presentation & Project Introduction

## View of SR 0288



The purpose of this presentation is to introduce the project to the public, gather feedback, and present the construction staging.

The Realignment Project of SR 0288, Section B04 (Zelienople Road) and SR 1010 (Lake Road) adjacent to the Zelienople Municipal Airport Runway 17 is a moderately complex project that will horizontally realign and vertically lower these highways to accommodate FAA clearance requirements for night-time operations on the Airport's Runway 17 approach.



Zelienople Airport

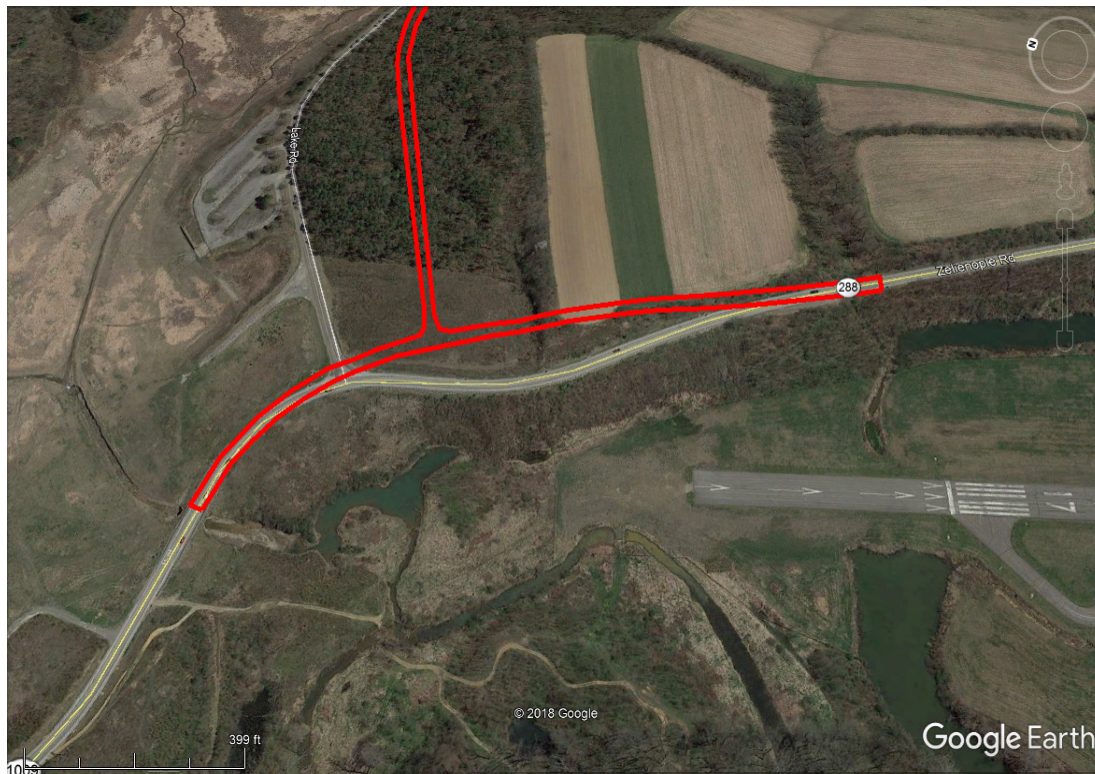




# Project Location



# Proposed Project Improvements



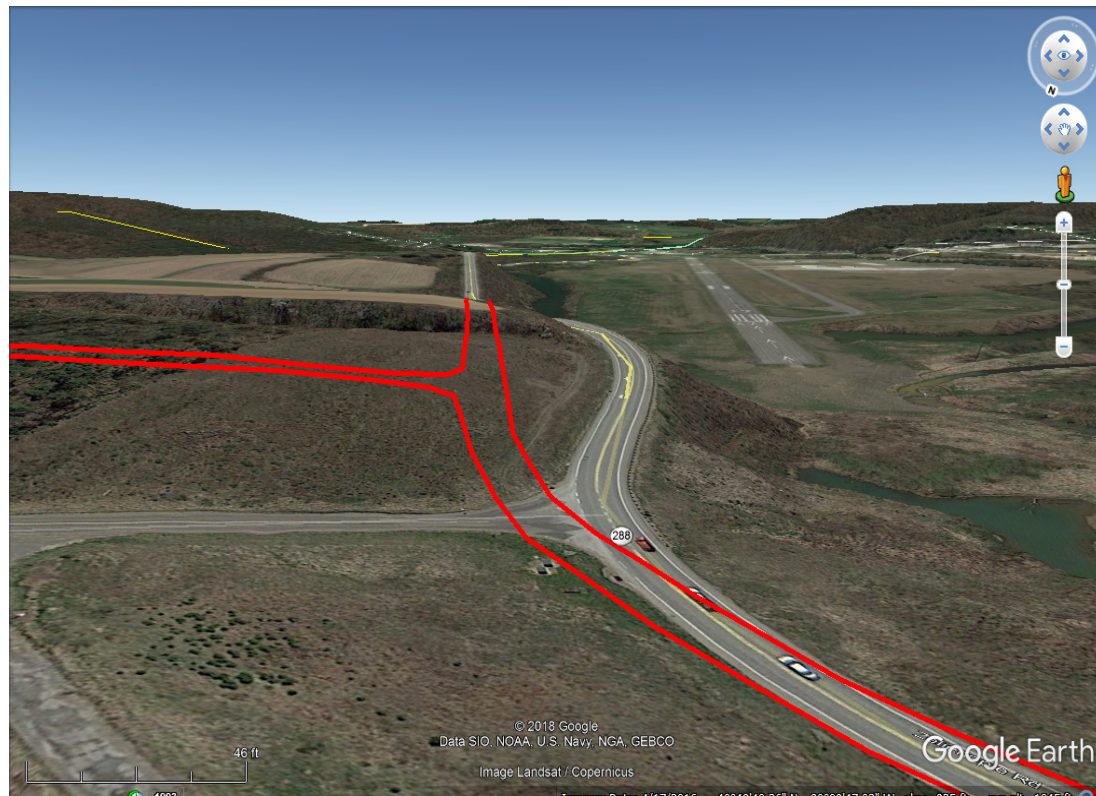
Realignment of 1,740-feet of SR 0288 will eliminate a reverse curve posted with an advisory speed limit and improve stopping sight distance to meet the minimum requirements. The highway will be lowered by as much as 50-feet.

Realignment of 1,247-feet of SR 1010 includes widening of the lanes from 9-feet to 10-feet and improving the stopping sight distances to meet the minimum requirements. The highway will be lowered by as much as 30-feet.

The realignment will relocate the intersection of SR 1010 with SR 0288 from a curved location to a tangent location; the elimination of this curve will improve the intersection sight distance to the south. The intersection will be lowered by 25-feet.



# Proposed Project Improvements - continued

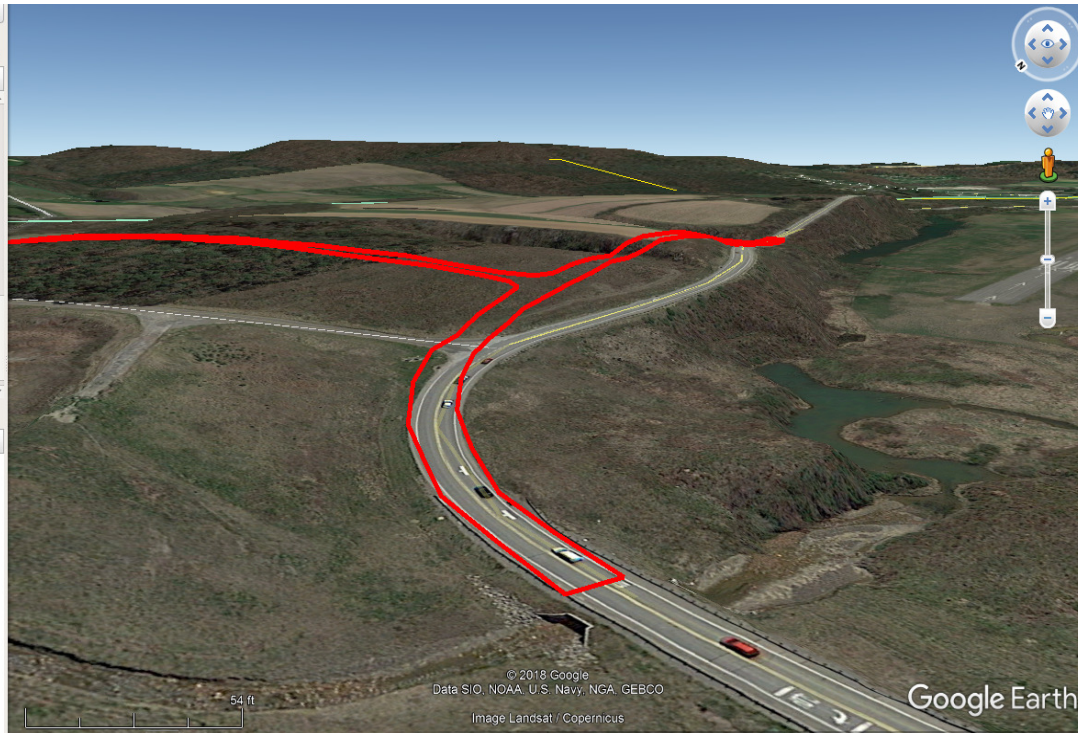


In order to reduce costs, the Airport Authority is performing excavation operations for the new location of SR 1010 without affecting the highways. The final portion of excavation will require SR 0288 and SR 1010 to be closed.

Seneca Valley School District stated that they will be able to make adjustments to their bus routes based on the detours. The Riverside School District stated that a normal bus will not be able to pass through the SR 1010 detour; they may need to employ another form of transportation for the affected students.

This project is being completed as part of a Multimodal Transportation funding Grant.

# Proposed Project Improvements - continued



The tentative construction schedule is as follow:

- Anticipated project let - Winter of 2020
- Notice to Proceed - Spring of 2021
- Project Completion - Fall 2021

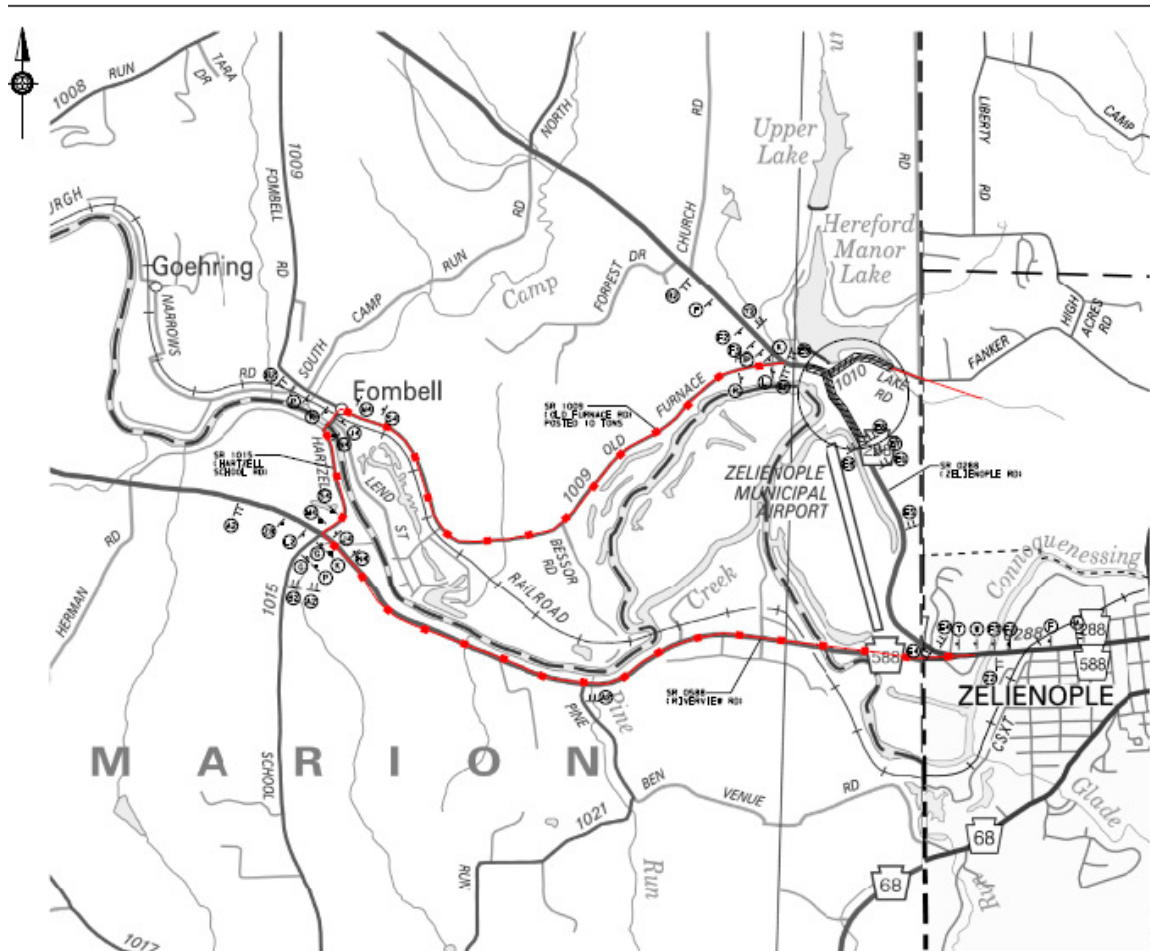
SR 0288 and SR 1010 will be closed during the entire duration of the project to expedite construction operations.

Utilities are currently being relocated for the project.





# Project Detour – SR 0288 (Car)



## SR 288 – Car Detour

### From State Route 288:

- Turn Right on to State Route 1009 (Old Furnace Road)
- In 2.3 Miles, Turn Left on to Hartzell Church Road
- In 0.5 Miles, Turn Left on to State Route 588 (Riverview Road)
- In 2.7 Miles, Keep Straight on to West New Castle Street

### From State Route 588:

- Turn Left on to State Route 588 (Riverview Road)
- In 2.7 Miles, Turn Right on to Hartzell Church Road
- In 0.5 Miles, Turn Right on to State Route 1009 (Old Furnace Road)
- In 2.3 Miles, Left on to State Route 288 (Zelenople Road)



Zelenople Airport



# Project Detour – SR 0288 (Truck)

## SR 0288 – Truck Detour

Local Deliveries can take State Route 288 for 6.5 Miles, but there is no Outlet.

From Ellwood City (State Route 288):

Start by Turning Left on to State Route 65 (Mercer Road)

In 4.6 Miles, Turn Right on to State Route 588 (Concord Church Road)

In 5.1 Miles, Turn to Keep Right on State 588 (Riverview Road)

In 3.9 Miles Keep Straight On State Route 588 (West New Castle Street)

**From Zelienople (W New Castle Street):**

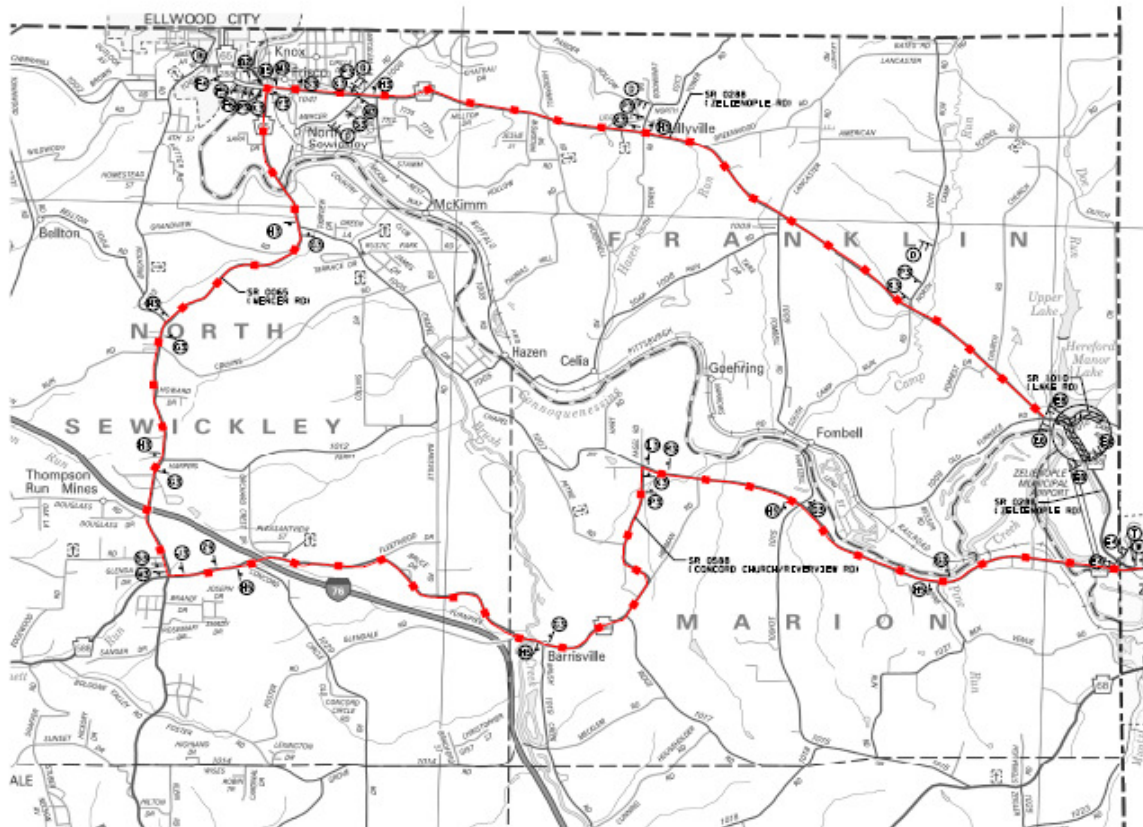
Start by Turning Left onto State Route 588 (Riverview Road)

In 3.9 Miles, Turn to Keep Left on to State Route 588 (Concord Church Road)

In 5.1 Miles, Turn Right on to State Route 65 (Mercer Road)

In 4.6 Miles, Turn to Keep Left onto State Route 65 and resume route.

Local Deliveries can take State Route 288 for 6.5 Miles, but there is no Outlet.



Zelienople Airport



pennsylvania  
DEPARTMENT OF TRANSPORTATION

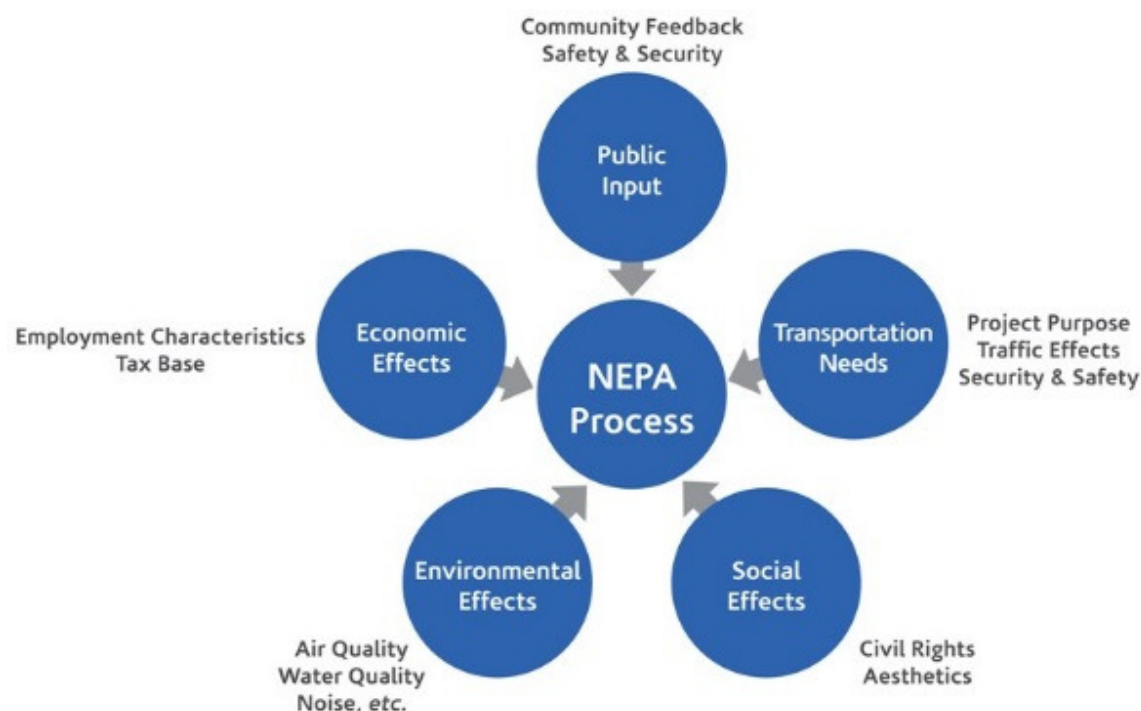




# National Environmental Policy Act (NEPA)

Public outreach begins with PennDOT Connects and extends into the **NEPA** (National Environmental Policy Act) process:

- PennDOT Connects is a project planning and development approach that engages local and planning partners by collaborating with stakeholders before project scopes are developed.
- NEPA requires agencies to integrate environmental values into their decision-making processes by considering the environmental impacts of their proposed actions and reasonable alternatives to those actions.
- NEPA also includes public involvement activities and gathering feedback from the public.
- This PowerPoint presentation is part of District 11-0's coordinator with the public to obtain feedback on the project and to meeting NEPA requirements.



# Project Survey

<https://forms.gle/sn4RtQTPbAuM5Vtj9>

